

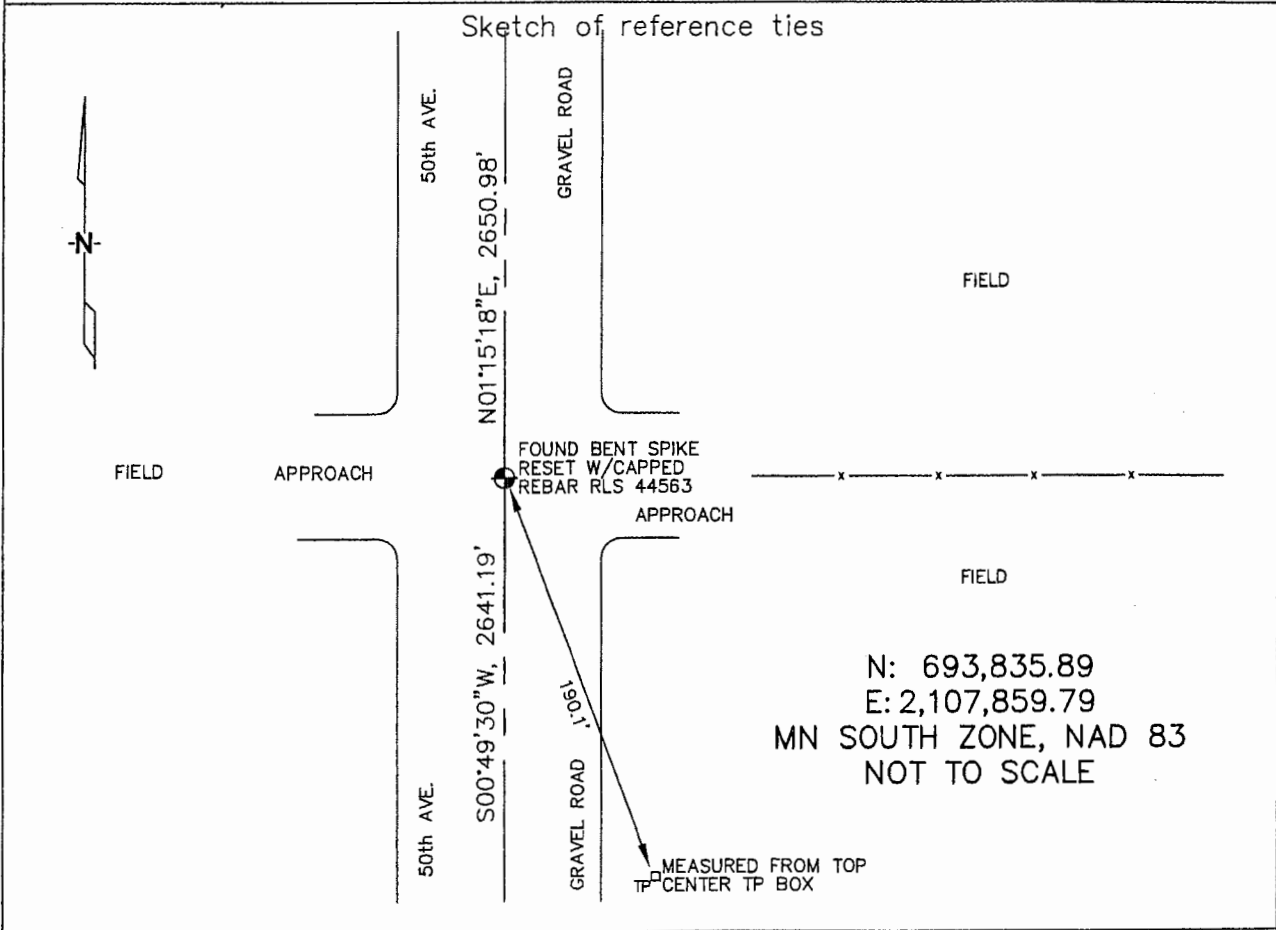
# CERTIFICATE OF LOCATION OF GOVERNMENT CORNER

WEST 1/4 Corner of Section 13, Township 106N, Range 43W, 5TH P.M.

STATE OF MINNESOTA, County of MURRAY

At the corner location shown on the sketch :

- On 3/22/2006 found A BENT SPIKE IN GAVEL ROAD, OPPOSITE  
A FENCE LINE RUNNING EAST.
- left monument as found,  lowered monument,  removed monument (explain)
- On 3/22/2006 set A 5/8" REBAR WITH CAP: RLS 44563 IN ITS  
PLACE.



Statement of evidence relative to this corner location is on back page

I hereby certify that this document and the data contained herein was prepared by me or under my direct supervision.

Thomas J. Jeff      5/22/06  
 Thomas J. Jeff      Date  
 Registration No. 44563

Land Surveyor,     Professional Engineer  
 County Surveyor,     County Engineer

OFFICE OF THE COUNTY RECORDER  
 County of \_\_\_\_\_

**SEP 28 2006**

I hereby certify that this document was filed in the Co. Recorders office at \_\_\_\_\_ .M. on the \_\_\_\_\_ day of \_\_\_\_\_ A.D. , 20

County Recorder James V. Johnson  
 By \_\_\_\_\_, Deputy

DOCUMENT NO. \_\_\_\_\_

STATEMENT OF EVIDENCE:

WEST 1/4 CORNER, SECTION 13, T. 106 N., R. 43 W.,  
MURRAY COUNTY, MINNESOTA

- 1866 J.W. Bishop, US. Deputy Surveyor, monumented corner.
- 3/22/2006 Ulteig Engineers, Inc., Survey Crew, Dennis Lavallie Party Chief, found a bent spike in the C/L of the gravel road, opposite a fence line running east. Replaced same with a 5/8" rebar with cap: RLS 44563.  
Ties: SE-190.1' to top, center of telephone pedestal;  
N-2650.98' to NW corner, Section 13;  
S-2641.19' to SW corner, Section 13.